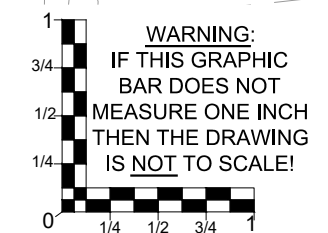
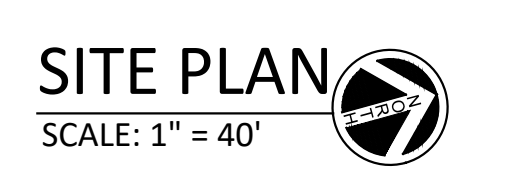
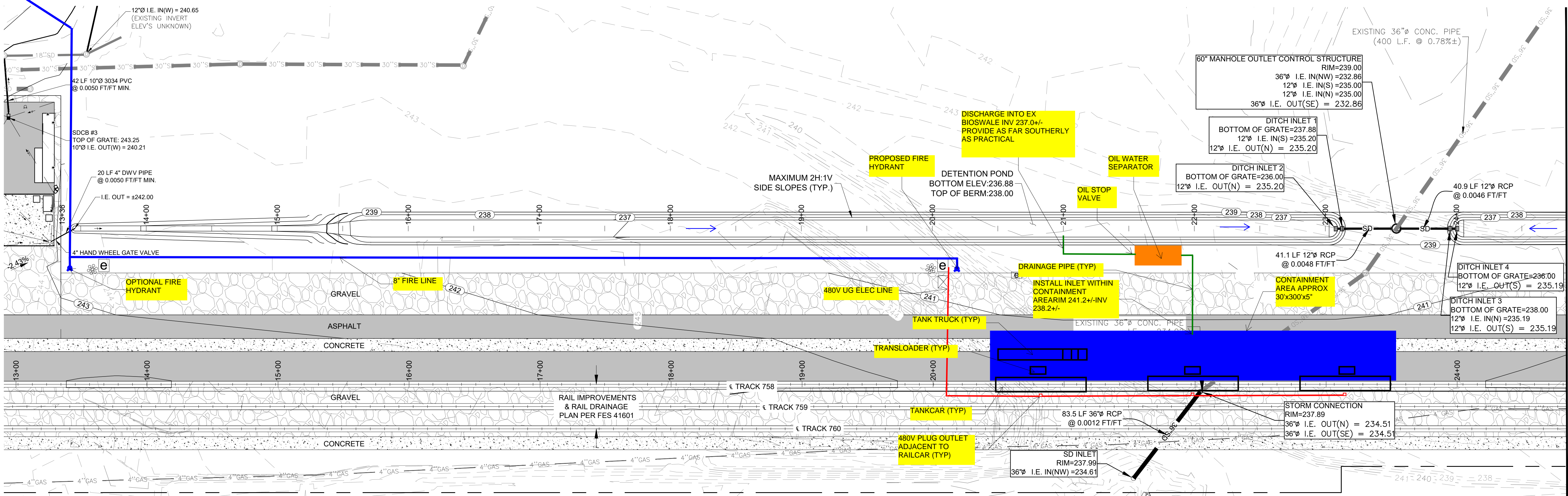




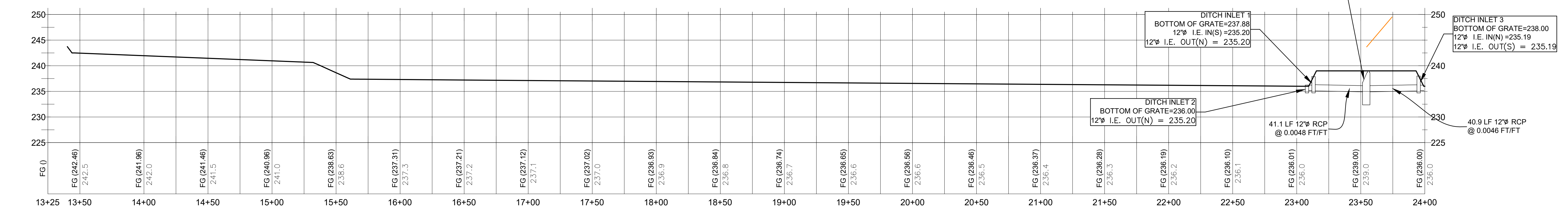
# Attachment C – Proposed Plans for the OMNI Green Energy Transloading Facility

*This page intentionally left blank.*

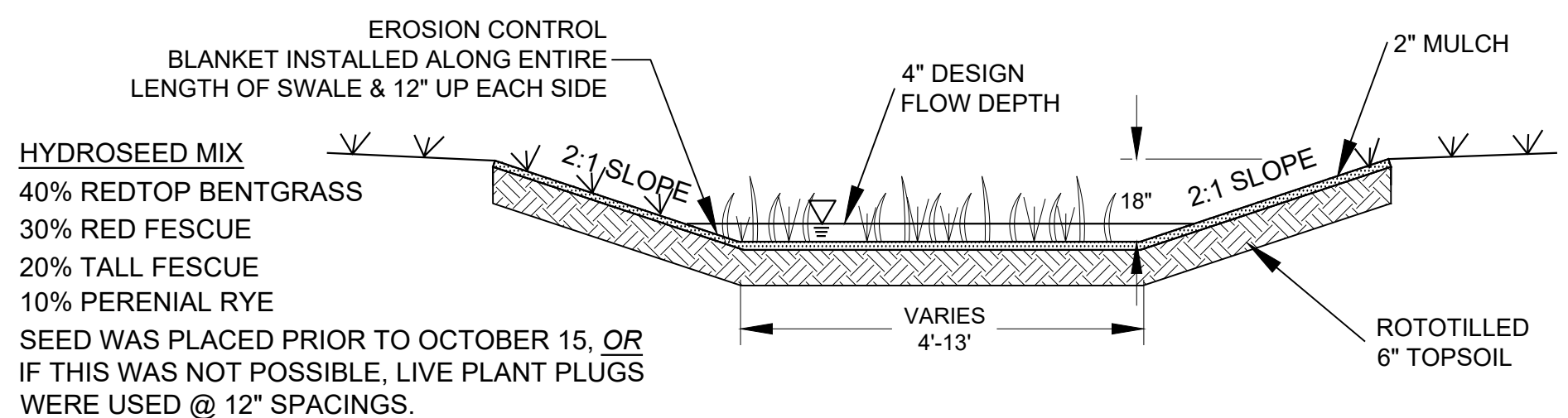


WARNING: IF THIS GRAPHIC BAR DOES NOT MEASURE ONE INCH THEN THE DRAWING IS NOT TO SCALE!

**RAIL NOTE:**  
FOR UPRR RAIL IMPROVEMENTS AND INDUSTRY RAIL YARD CONSTRUCTION, REFER TO UPRR APPROVED PLANS FES 41601 & 47812.



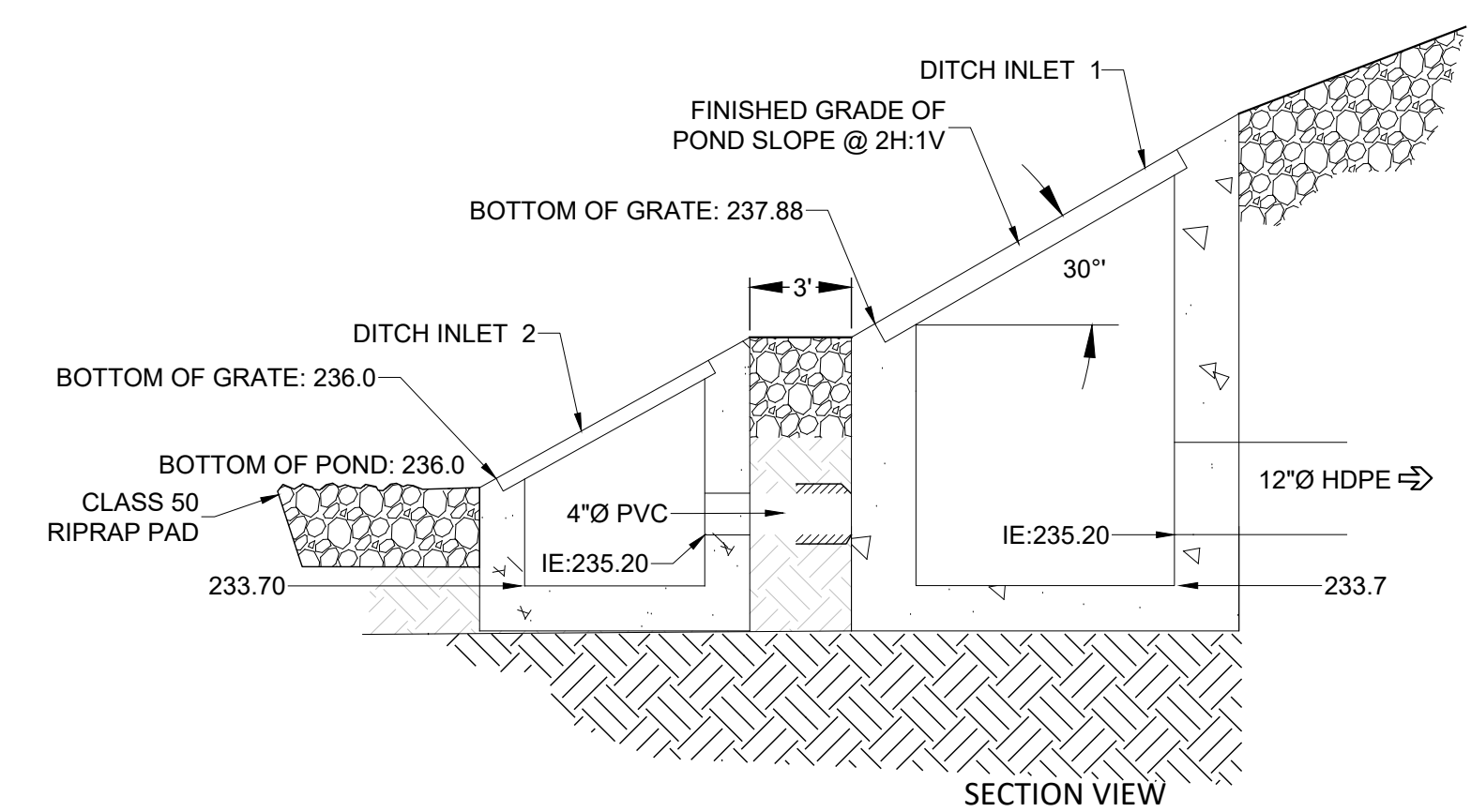
PROFILE: WEST SWALES STA: 13+25 TO 24+00  
HORIZONTAL SCALE: 1" = 40'  
VERTICAL SCALE: 1" = 10'



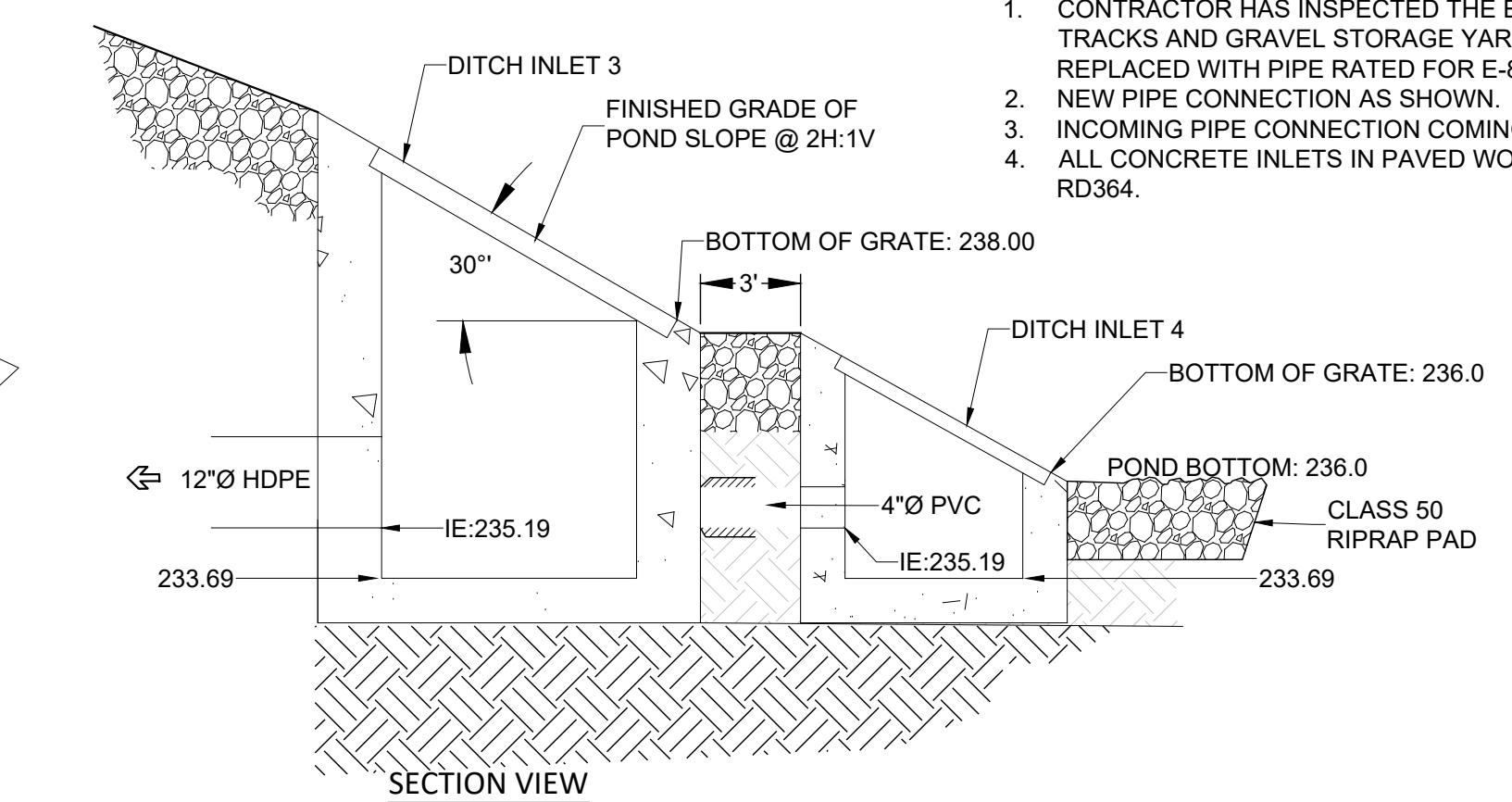
**HYDROSEED MIX**  
40% REDTOP BENTGRASS  
30% RED FESCUE  
20% TALL FESCUE  
10% PERENNIAL RYE  
SEED WAS PLACED PRIOR TO OCTOBER 15, OR IF THIS WAS NOT POSSIBLE, LIVE PLANT PLUGS WERE USED @ 12" SPACINGS.

NOTE: GRASSES WERE ESTABLISHED AS SOON AS POSSIBLE AFTER THE COMPLETION OF THE BIOSWALE. THE INITIAL RATE OF APPLICATION WAS 5 POUNDS OF SEED MIX PER 1000 SQUARE FEET OR AS APPROVED BY THE AGENCY. THE SEED MIX IS A LOW MAINTENANCE VARIETY.

**VEGETATED BIO-FILTRATION SWALE**  
NOT TO SCALE



**DRY DETENTION BASIN OUTLET CONTROL STRUCTURE**  
NOT TO SCALE



**DRY DETENTION BASIN OUTLET CONTROL STRUCTURE**  
NOT TO SCALE

- NOTES:**
- CONTRACTOR HAS INSPECTED THE EXISTING 36" RCP IN THE AREA OF THE TRACKS AND GRAVEL STORAGE YARD. DAMAGED PORTIONS HAVE BEEN REPLACED WITH PIPE RATED FOR E-80 LOADING.
  - NEW PIPE CONNECTION AS SHOWN.
  - INCOMING PIPE CONNECTION COMING FROM WEST HAS BEEN PLUGGED.
  - ALL CONCRETE INLETS IN PAVED WORKING YARD ARE TYPE G2-MA PER DOT RD364.

Reece & Associates, Inc.  
321 First Avenue East, Suite 3a  
Albany, Oregon 97321  
Phone: 541-926-2428  
Fax: 541-926-2456

REGISTERED PROFESSIONAL  
ENGINEER  
11,749  
OREGON  
JULY 16, 1981  
DAVID J. REECE

MID-WILLAMETTE VALLEY INTERMODAL CENTER  
SITE DRAINAGE - STORM INSET 3  
LINN ECONOMIC DEVELOPMENT GROUP  
MILLERSBURG, OREGON

PLAN REVISIONS		
No.	DATE	BY
AS-BUILT	03-08-2022	AKV

R&A PROJECT NO. LED1901

DATE	03/11/2021
DESIGNED	K. RICCIPELLI
ENGINEER	D. REECE
CHECKED	A. CECCHINI
SCALE	AS INDICATED



